



NEW

# MC305CB-5

Crane Capacity  
2.98t × 2.5m

Max. working radius  
12.16m × 0.26t

Max. Lifting Height  
12.52m

## Fully Electric Powered Spider Crane



Multi Outrigger Mode



Working Range Setting for Slewing Restriction



Proportional Radio Remote Control



Front Camera & LED Light



Eco modes

Light Weight & Low Noise  
Lithium-ion Battery  
High Capacity Battery With Long Life  
Minimal Charging Time  
Continuous Operation While Charging

Crane / Outrigger Interlock System  
Programmable Moment Limiter  
Multi Outrigger Mode  
Digital Feedback Remote Control  
4 Fall / 2 Fall Hook Block  
Available with Searcher Hooks

1.5t Searcher Hook (option)



Zero Emissions



Lithium Titanate Battery



With 850kg Searcher Hook (option)

## Specifications

Model		MC305CWMB-5	
Crane capacity		2.98t x 2.5m	
Max. working radius		12.16m x 0.26t	
Max. lifting height (on the ground)		12.52m	
Max. lifting height (underground)		-16.09m (4 falls)	
Winch system	Hook speed	9.2m/min (4 layers, 4 falls)	
	Hoist wire rope	IWRC 6 × WS(26) φ8 × 73m	
Telescoping system	Type	Fully automatic 5-section pentagonal telescopic boom	
	Boom length	3.695 ~ 12.485m	
	Boom telescoping stroke / time	8.79m / 39.6sec	
Boom hoist system	Hoist angle / time	0~80deg / 19.9sec	
Slewing system	swing angle / time	360deg / 1.6rpm	
Outrigger system	Type	Extended Hydraulic cylinder direct acting Setting up Hydraulic cylinder direct acting	
	Max. extended width (outer dims)	(Lateral) 5,170mm x (Front) 4,808mm x (Rear) 4,704mm	
Travel system	Type	Hydraulic motor driven , stepless speed changer	
	Travel speed	0 ~ 1.4km/h	
	Gradability	23deg	
	Crawler ground length x width	1,115mm x 300mm	
	Ground pressure	57.7kpa [0.59kgf/cm <sup>2</sup> ]	
Battery system	Type	Lithium Titanate Battery	
	5-hour rate capacity	DC55V -180Ah , 10.0kWh	
	Input Voltage / current	Single phase AC200V / 16A, AC100V/15A	
	Charging time	with AC-200V	80% : 3h00min / 100% : 4h30min
		with AC-100V	80% : 8h15min / 100% : 10h30min
	Operating time	Travelling (Hi speed)	Up to 2h 50min
		Crane	Up to a full working day if charged during operation
	Charging during operation	Available	
Rated Output	Variable 7.5kW AC30V at 2500min <sup>-1</sup>		
Remote control system	Type	Paddle type proportional radio remote controller	
	Micro/High speed mode	Available	
	Load display for transmitter	Available	
	Outrigger operation	Available	
Overall length x width x height	4,110mm x 1,280mm x 1,695mm		
Machine weight	3,935kg		
Safety device	Overwind protection, Load indicator, Hydraulic safety valve, Wire rope latch, Level, Machine body inclination alarm, EMO switch, Travel lock lever, Crane/Outrigger interlock device, Moment limiter, Rotary lamp, Front camera, Slew restriction system, Anti-Interference device		
Options	Black rubber track, Single fall hook, Protection roll bar, Searcher hooks (850kg, 1,500kg)		

Fully Electric Powered Spider Crane

# MC305CB-5

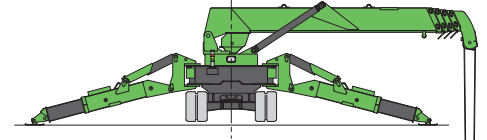


## Rated Total Load Chart (4falls)

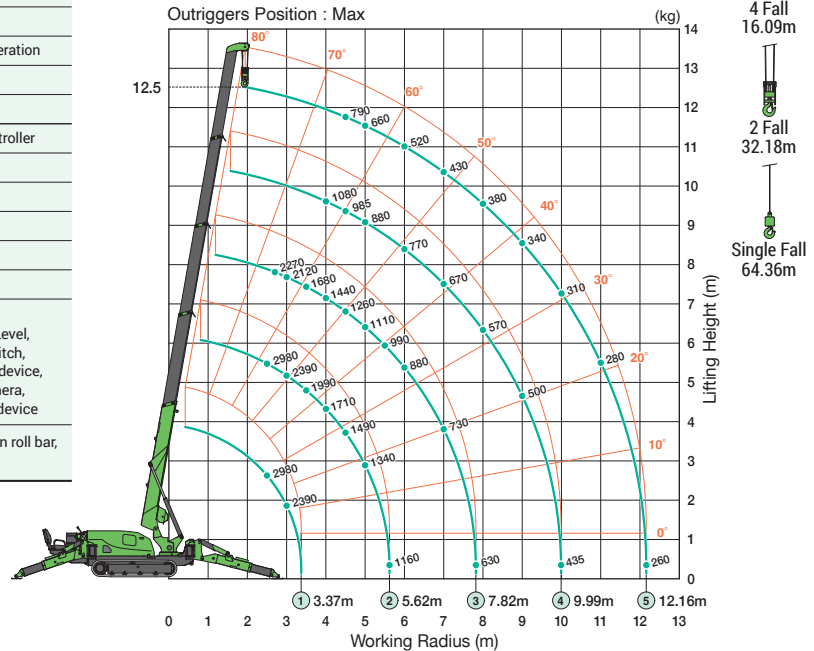
Outrigger extended to maximum							
3.695m / 5.945m Boom		8.145m Boom		10.315m Boom		12.485m Boom	
Working radius(m)	Rated total load(kg)	Working radius(m)	Rated total load(kg)	Working radius(m)	Rated total load(kg)	Working radius(m)	Rated total load(kg)
2.5 or less	2980	2.7	2270	4.0	1080	4.5 or less	790
3.0	2390	3.0	2120	4.5	985	5.0	660
3.5	1990	3.5	1680	5.0	880	6.0	520
4.0	1710	4.0	1440	6.0	770	7.0	430
4.5	1490	4.5	1260	7.0	670	8.0	380
5.0	1340	5.0	1110	8.0	570	9.0	340
5.62	1160	5.5	990	9.0	500	10.0	310
		6.0	880	9.99	435	11.0	280
		7.0	730			12.16	260
		7.82	630				

\* The Rated Total Load Chart is based on actual working radius with the bending of boom attributable to load reflected and is shown with the mass of hook (30kg) included.

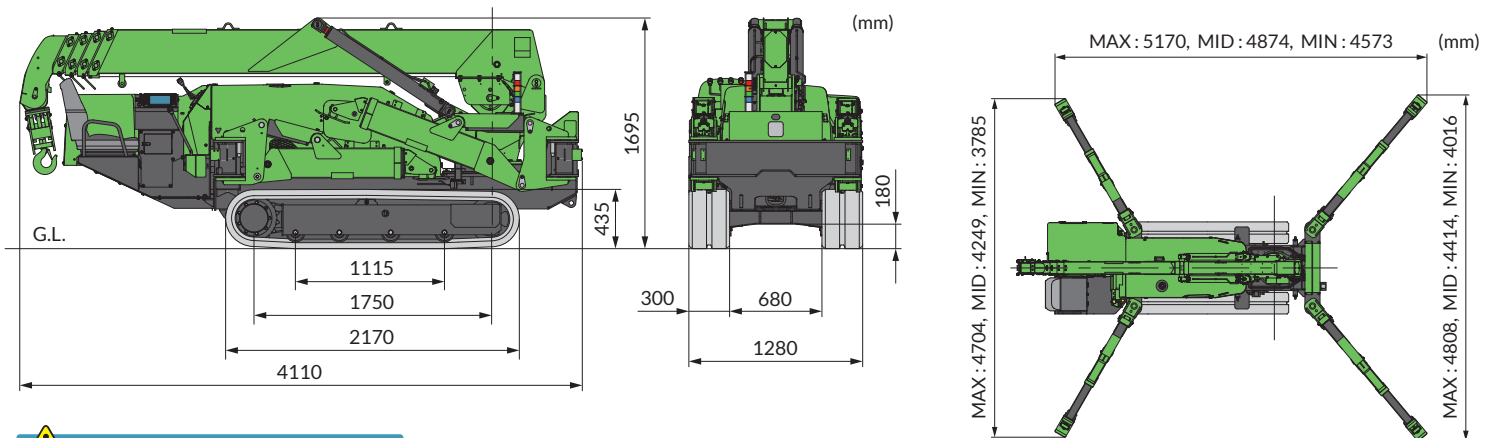
## MAX. Reach Below Ground



## Working Range Chart (4falls)



## Dimensions



**⚠ Before use, please read the Operation Manual**

\* Due to improvements, the specifications are subject to change without notice.

**MAEDA SEISAKUSHO CO., LTD.**

Head office  
No.1095, Onbegawa, Shinonoi, Nagano-City, Nagano-Pref. 388-8522 Japan  
TEL.+81(0)26 292 2230 FAX.+81(0)26 293 8499  
URL : [www.maeda-minicranes.com](http://www.maeda-minicranes.com) E-mail : [contact@maeda-minicranes.com](mailto:contact@maeda-minicranes.com)

